

A large, abstract graphic consisting of many thin, parallel, wavy lines that create a sense of movement and depth. It starts from the bottom left, curves upwards and to the right, then loops back down and to the left, ending near the top right corner.

Manual **Nero RescueAgent**

Copyright and Trademark Information

This document, like the software described therein, is provided as a license and may only be used or reproduced in accordance with the licensing agreement. The contents of this document, as well as the associated software, is subject to change without prior notice. Nero AG rejects any responsibility for the correctness of the contents of this document and rejects any claims that transcend the clauses of the guarantee agreement.

This document and all of its contents are protected by copyright and are the property of Nero AG. All rights reserved. In addition, this document contains material that is protected by internationally valid copyright. This document may not be reproduced, transmitted, or transcribed in whole or in part without the express written permission of Nero AG.

Please keep in mind that existing graphics, pictures, videos, music titles or other materials that you may wish to insert or transcribe into projects may be protected by copyright. The unauthorized use of this type of material in your projects may violate the rights of the owner of the copyright. Make sure that you obtain all necessary authorizations from the owner of the copyright.

Unless you own the copyright, have permission from the copyright owner or your actions fall under the "fair use" provisions of copyright law, you may be violating national or international copyright laws. The transcribing, duplication, modification or publication of copyright-protected material may lead to claims for damages and the enforcement of other legal measures against you. If you are unsure of your rights, you should contact your legal advisor.

Some Nero Suite applications require technologies developed by third-party manufacturers and may be included in Nero Suite as demo versions. These applications can be activated online free of charge or by sending an activation fax to have unlimited use of the version. Nero will only transmit the data necessary for activation of the technology licensed from third parties. For unlimited use of Nero Suite, it is therefore necessary to have an Internet connection or a fax machine.

Copyright © 2006 - 2009 Nero AG and its licensors. All rights reserved.

Nero, Nero Digital, Nero BackItUp, Nero Essentials, Nero Express, Nero ImageDrive, Nero LiquidTV, Nero MediaHome, Nero Recode, Nero RescueAgent, Nero ShowTime, Nero Simply Enjoy, Nero StartSmart, Nero Vision, InCD, Move it, PhotoSnap, the SecurDisc logo, Burn-At-Once, DNC Dynamic Noise Control, LayerMagic, Nero DMA Manager, SmartDetect, SmoothPlay, Superresolution, Nero Surround, Nero LiquidMedia, Nero MediaStreaming and UltraBuffer are trademarks or registered trademarks of Nero AG.

Adobe, Acrobat, Acrobat Reader and Premiere are trademarks or registered trademarks of Adobe Systems, Incorporated. AMD Athlon, AMD Opteron, AMD Sempron, AMD Turion, ATI Catalyst and ATI Radeon are trademarks or registered trademarks of Advanced Micro Devices, Inc. ATSC is a trademark of the Advanced Television Committee. ICQ is a registered trademark of AOL, LLC. ICQ is a trademark of the Advanced Television Committee. Apple, iPhoto, iPod, iTunes, iPhone, FireWire, and Mac are trademarks or registered trademarks of Apple, Inc. ARM is a registered trademark of ARM, Ltd. AudibleReady is a registered trademark of Audible, Inc. BenQ is a trademark of the BenQ Corporation. Blu-ray Disc is a trademark of Blu-ray Disc Association. CyberLink is a registered trademark of CyberLink Corp. DLNA is a registered trademark of Digital Living Network Alliance. DivX and DivX Certified are registered trademarks of DivX, Inc. Dolby, Pro Logic and the double-D symbol are trademarks or registered trademarks of Dolby Laboratories, Inc. DTS and DTS Digital Surround are registered trademarks of DTS, Inc. DVB is a registered trademark of the DVB Project. Freescale is a trademark of Freescale Semiconductor, Inc. Google and YouTube are trademarks of Google, Inc. WinTV is a registered trademark of Hauppauge Computer Works, Inc. Intel, Intel XScale, Pentium and Core are trademarks or registered trademarks of Intel Corporation. Linux is a registered trademark of Linus Torvalds. Memorex is a registered trademark of Memorex Products, Inc. ActiveX, ActiveSync, DirectX, DirectShow, Internet Explorer, Microsoft, HDI, MSN, Outlook, Windows, Windows Mobile, Windows NT, Windows Server, Windows Vista, Windows Media, Xbox, Xbox 360, the Windows Vista start button and the Windows logo are trademarks or registered trademarks of Microsoft Corporation. My Space is a trademark of MySpace, Inc. NVIDIA, GeForce and ForceWare are trademarks or registered trademarks of NVIDIA Corporation. Nokia is a registered trademark of Nokia Corporation. CompactFlash is a registered trademark of SanDisk Corporation. Sony, Memory Stick, PlayStation, PLAYSTATION and PSP are trademarks or registered trademarks of Sony Corporation. HDV is a trademark of Sony Corporation and Victor Company of Japan, Limited (JVC). UPnP is a registered trademark of the UPnP Implementers Corporation. LabelFlash is a registered trademark of Yamaha Corporation.

The trademarks mentioned here are named for information purposes only. All trade names and trademarks are the property of their respective owners.

Nero AG, Im Stoeckmaedle 13-15, D-76307 Karlsbad, Germany



Nero RescueAgent

Table of contents



1	Start Successfully	4
1.1	About the Manual	4
1.2	About Nero RescueAgent	4
1.3	Working with Nero RescueAgent	5
2	Starting The Program	6
3	Start screen	7
3.1	Select Storage Medium and Scan Level	8
4	Files to Recover Screen	9
4.1	Show Specific Files / Only Specific Files Window 10	
4.2	Select Files to Recover 12	
5	Recovery Completed Screen	13
5.1	Save log file 14	
6	End screen	15
7	Technical Information	16
7.1	System Requirements 16	
7.2	Supported File Systems 16	
7.3	Key Combinations 16	
7.4	Versions of Nero RescueAgent	5
8	Glossary	18
9	Index	19
10	Contact	20

1 Start Successfully

1.1 About the Manual

This manual is intended for all users who want to learn how to use Nero RescueAgent. It is process-based and explains how to achieve a specific objective on a step-by-step basis.

To make best use of this documentation, please note the following conventions:

	Indicates warnings, preconditions or instructions that have to be precisely followed.
	Indicates additional information or advice.
1. Start ...	The number at the beginning of a line indicates a prompt for action. Carry out these actions in the order specified.
→	Indicates an intermediate result.
➔	Indicates a result.
OK	Indicates text passages or buttons that appear in the program interface. They are shown in boldface.
(see...)	Indicates references to other chapters. They are executed as links and are shown in red and underlined.
[...]	Indicates keyboard shortcuts for entering commands.

1.2 About Nero RescueAgent

With Nero RescueAgent you can quickly and easily recover files from storage media, that, for instance, have been corrupted by scratches or cannot be read correctly due to ageing.

The following storage media are supported by Nero RescueAgent.

- CD
- DVD
- Hard drive
- USB stick
- Memory card
- Floppy

For multisession disks and disks formatted for the UDF file system capable of packet writing, Nero RescueAgent also provides the option of recovering deleted files and older file versions.

1.3 Versions of Nero RescueAgent

Nero RescueAgent is available in two different versions: Nero RescueAgent in the Nero Suite and Nero RescueAgent in Nero BackItUp & Burn.

Nero RescueAgent in the Nero Suite offers the full range of features. Nero RescueAgent in Nero BackItUp & Burn has the following restriction:

- Files to be recovered is limited to five per session

1.4 Working with Nero RescueAgent

The Nero RescueAgent Assistant helps you to restore files in just a few steps.

The following individual steps are necessary.

- Select storage medium and scan level.
- Search storage medium for files that can be restored.
- Select files to be restored and define storage location for files.
- Start Restore
- Save log file (optional)


Then you can either start a new scan, scan the storage medium again, restore files or end Nero RescueAgent.

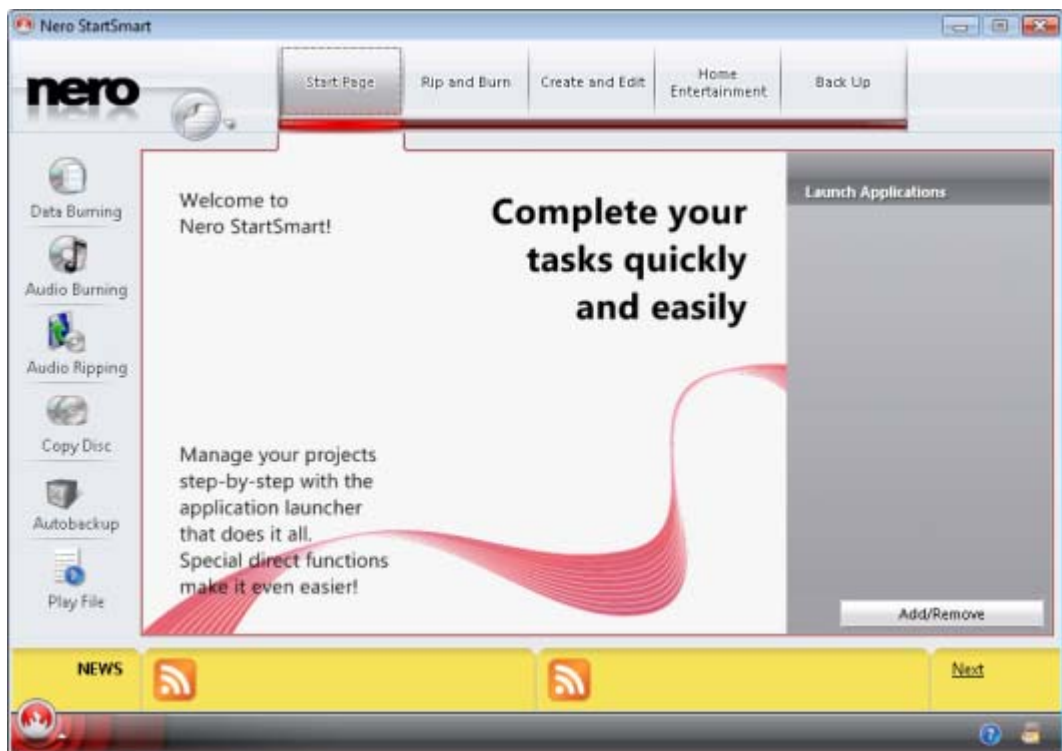
See also:

- 📖 Select Storage Medium and Scan Level→ 8
- 📖 Select Files to Recover→ 12
- 📖 Save log file→ 14

2 Starting The Program

To start Nero RescueAgent, proceed as follows:

1. If you use the Nero Suite and have Nero StartSmart available:
 1. Click the **Nero StartSmart** icon.
 - The Nero StartSmart window is opened.
 2. Click the  button.
 - The list of Nero applications is displayed.
 3. Select the **Toolbox** > Nero RescueAgent entry in this selection list.
 - The Nero RescueAgent window is opened.

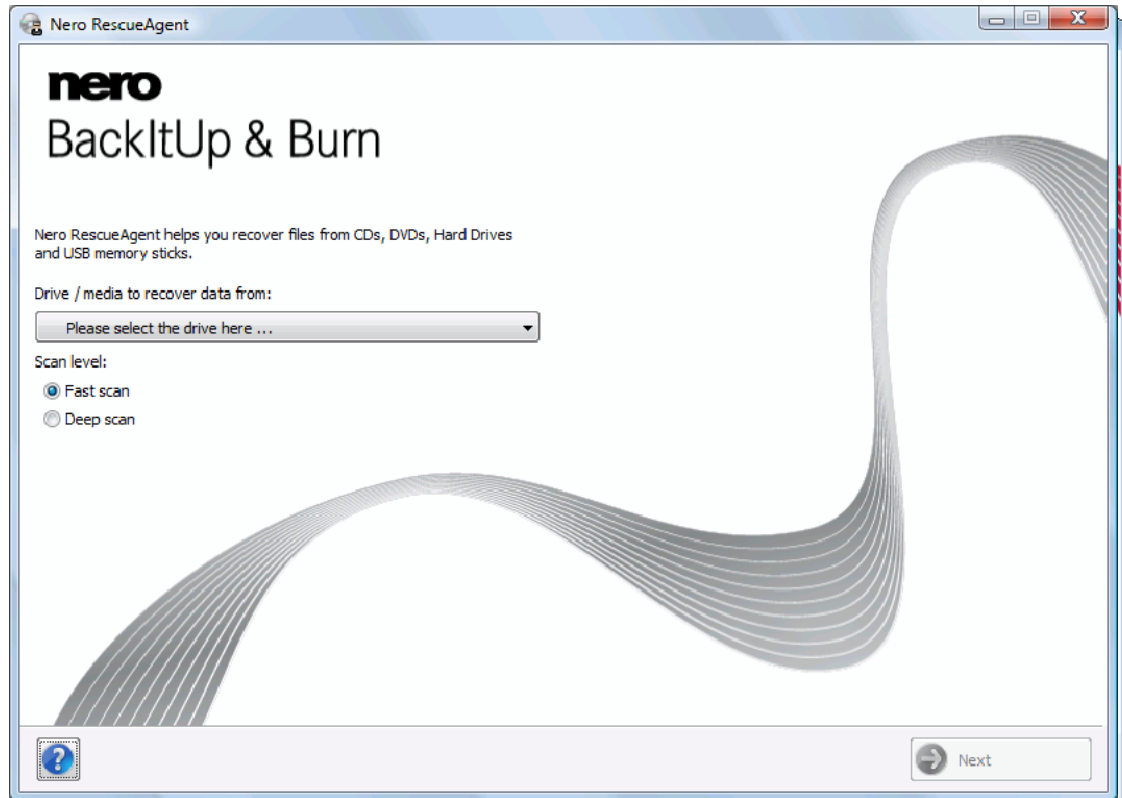


Nero StartSmart window

2. If you use Nero BackItUp & Burn:
 1. Click the **Nero BackItUp** icon.
 - The Nero BackItUp window is opened.
 2. Click the Nero RescueAgent button.
 - The Nero RescueAgent window is opened.
- You have started Nero RescueAgent.

3 Start screen

In the start screen of Nero RescueAgent, you can select the storage medium from which to restore data. In addition you can choose between a fast and a deep scan.



Start screen

The following setting options are available:

Drop-down menu Drive/media from which to recover data:	Selects the storage medium from which data is to be restored.
Option button Fast scan	Selects the faster scan. The fast scan searches only the <u>FAT</u> file system of the storage medium. With the aid of the fast scans, deleted files and older file versions are found.
Option button Deep scan	Selects the deep scan. The deep scan searches the whole storage medium. With the deep scan you will find individual faulty meta-file entries, corrupted files, unreadable sectors as well as files that have been deleted and that are no longer visible in the FAT file system. The deep scan takes much longer than the fast scan.

Button Help	Opens the Help window and displays information on program and version number.
Button Next	Starts the search for files that can be recovered.

3.1 Select Storage Medium and Scan Level

To select the storage medium and the scan level, proceed as follows:

1. Place the desired disc into the drive or connect the desired storage medium to your computer.
2. Select the storage medium from the **Drive / Data Medium from which to Restore Data** from the drop-down menu.
3. Select the desired scan level.



The fast scan only searches the FAT file system of the storage medium. The fast scan finds deleted files and older file versions.

The deep scan searches the whole storage medium. With the deep scan you can find individual faulty meta-file entries, corrupted files, unreadable sectors as well as files that have been deleted and which are not visible in the FAT file system.

The deep scan takes much longer than the fast scan.

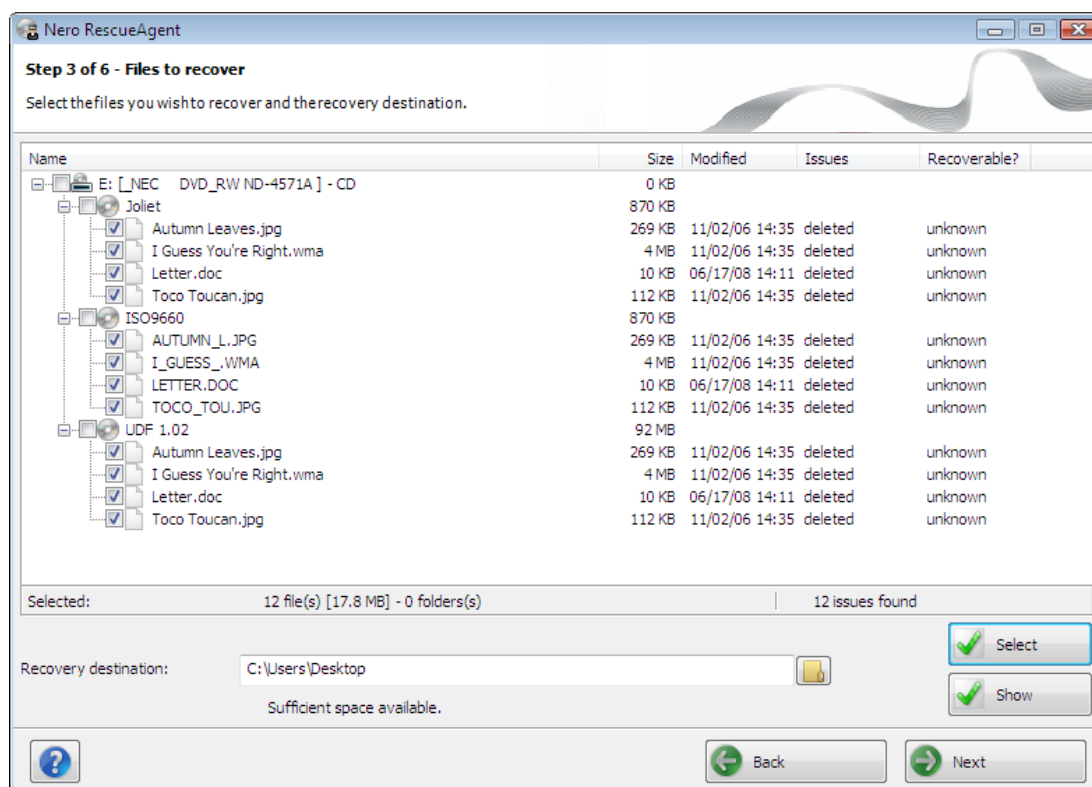
4. Click the **Next** button.
 - ➔ The **Fast Scan Being Processed** screen or the **Deep Scan Being Processed** screen is displayed. Progress can be followed here. After completion of the search, the **Files to Recover** screen is displayed.

See also:

- 📖 Select Files to Recover → 12
- 📖 Start screen → 7


4 Files to Recover Screen

The **Files to Recover** screen lists all files that can be restored. If files can only to be partly restored, they are marked in yellow. If there is only a small probability that files can be restored, they are marked in red.



Files to Recover screen

The following setting options are available:

Button Select	Opens the Select Specified Files window. Here files can be selected according to particular criteria and also problem categories can be chosen for restoring.
Button Displays	Opens the Show only Specific Files window. Here files can be selected according to particular criteria and problem categories can be chosen for restoring.
Button 	Opens the Find Folder window. Here you can define the folder in which the restored files are to be saved.
Button Back	Returns to the start screen.

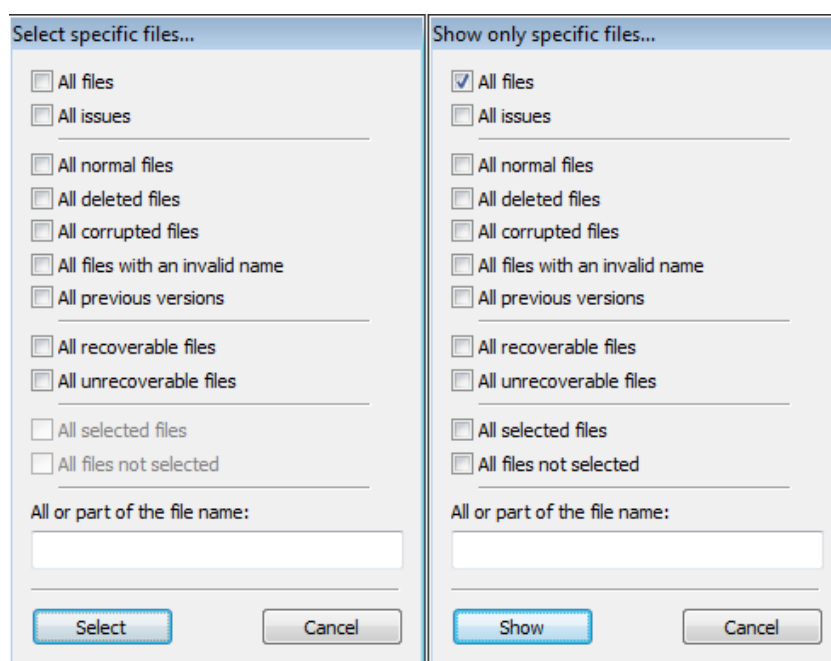
Button Next	Starts the recovery of the selected files. Only available when a storage locality for the files to be restored has already been defined.
-----------------------	---

See also:

 [Select Files to Recover](#) → 12

4.1 Show Specific Files / Only Specific Files Window

In the **Select Specific Files** and **Only Show Specific Files** windows, files can be selected and can be displayed in the **Files to Recover** screen. The files can be selected according to particular criteria and also problem categories whereby an easy overview is obtained even for long lists.



Select Specific Files and Show only Specific Files window

The following setting options are available:

Check Box All files	Selects all files or shows them
Check Box All problems	Selects all files from all problem categories or shows them.
Check Box All normal files	Selects all files or shows files in which no faults have been found.

Check Box All deleted files	Selects all deleted files or shows them.
Check Box All corrupted files	Selects all corrupted files or shows them. Nero RescueAgent finds corrupted files only when the Deep Scan option has been selected in the start screen.
Check Box All files with incorrect file names	Selects all files with incorrect file names or shows them. Nero RescueAgent finds files with incorrect names only if the Deep Scan option has been selected in the starting screen.
Check Box All previous versions	Selects all older file versions or shows them.
Check Box All recoverable files	Selects all files that can be restored or shows them.
Check Box All unrecoverable files	Selects all files that cannot be restored or shows them.
Check Box All selected files	Shows all selected files Only available in Display Specific Files window.
Check Box All files not selected	Shows all files that have not been selected. Only available in Display Specific Files window.
Input field All or part of the file name:	Enter a search term here which is to be searched for in the listed files in the Files to Recover screen. All files that contain the search term are listed or shown.
Button Select	Closes the Select Specific Files window and marks all the selected criteria and problem categories in the Files to Recover screen.
Button Displays	Closes the Only Select Specific Files window and shows all the selected criteria and problem categories in the Files to Recover screen.
Button Close	Closes the Select Specific Files or the Show Only Specific Files window.


4.2 Select Files to Recover

The **Files to Recover** screen lists all files and folders that can be restored. As the list can be very long, there it is possible to show files according to certain criteria and problem categories. The files can also be selected from the folder tree.

The following requirements have to be fulfilled:

- You have searched the desired storage medium for files to be restored.
- The **Files to Recover** screen is displayed.

In order to select files according to specific criteria and problem categories, proceed as follows:




1. Click the **Select** button.
→ The **Select Specific Files** window opens.
2. Select the check box of the desired criteria or enter a search term in the **All or Part of the File Name** input field and click the **Select** button.
→ The **Select Specific Files** window is closed. The **Select** button receives a green tick.
3. Click the **Display** button.
→ The **Show only Specific Files** window is opened.
4. Select the check boxes of the criteria and problem categories or enter a search term in the **All or Part of a File Name** input field and click the **Display** button.
→ The **Show only Specific Files** window is closed. The **Display** button receives a green tick.
5. Click the  button in order to define the target folder of the file to be restored.
→ The **Browse Folder** window is opened.



The folder in which the files are to be stored must not be situated on the same storage medium from which the files are to be restored.

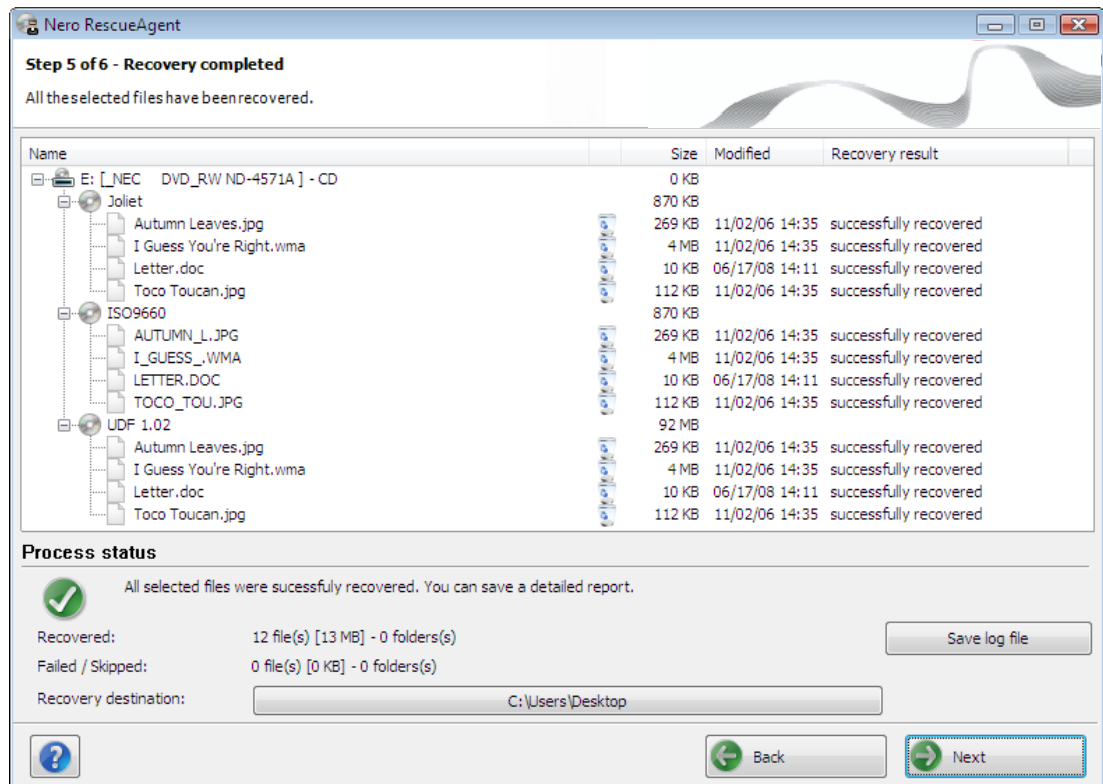
6. Select the folder in which the files are to be stored and click the **OK** button.
→ The **Browse folder** window is closed.
7. Click the **Next** button.
→ Nero RescueAgent begins restoring the selected files. This can take some time depending on how severely the storage medium is damaged. After restoration is complete, the **Restoration Completed** screen appears.

See also:

-  Save log file → 14
-  Files to Recover Screen → 9
-  Show Specific Files / Only Specific Files Window → 10

5 Recovery Completed Screen

All recovered files are displayed in the **Recovery complete** screen. The screen also indicates how many files could not be recovered. You can save a log file as a summary of the recovery performed.



Recovery Completed Screen

The following setting options are available:

Button Save log file	The Save as dialog appears. You can specify the storage location for the log file here. The log file is saved in TXT format.
Button Location	Opens the folder in which the restored files were saved.
Context Menu Explore this folder	Opens the folder in which the marked file was saved in Windows® Explorer.
Button Back	Returns to the Files are Being Restored screen.
Button Next	Changes to the end screen of Nero RescueAgent.

5.1 Save log file

The following requirements must be fulfilled:

- You have restored files with Nero RescueAgent.
- The **Restoring Completed** screen is displayed.

To save a log file, proceed as follows:

1. Click the **Save Log File** button.
→ The **Save As** window is opened.
2. Select the folder to which the log file is to be saved and click the **OK** button.
→ The **Save as** dialog is closed.
3. Click the **Next** button.
→ The end screen of Nero RescueAgent appears. You can now either start a new scan, scan the same storage medium again, restore further files or close Nero RescueAgent.

See also:

📄 Recovery Completed Screen → 13

6 End Screen

In the end screen you can either start a new scan, scan the same storage medium again, restore further files or end Nero RescueAgent.

The following setting options are available:

Menu icon New scan	Returns to the start screen.
Menu icon Scan the same drive	Restarts a scan on the same drive with the same scan options.
Menu icon Recover more files	Changes to the Files to Recover screen. Here you can select further files to restore, or simply restart restoring with the files that are already selected.
Menu icon Close this application	Closes Nero RescueAgent.
Button Close	Closes Nero RescueAgent.

7 Technical Information

7.1 System Requirements

Nero RescueAgent is installed along with the Nero products. The same conditions as for the installed products apply. You can find more detailed information on the system requirements under www.nero.com.

7.2 Supported File Systems

- UFD (versions 1.0 to 2.6)
- UDF/ISO 9660 (including Joliet).
- Multisession Disc
- UDF/ISO Bridge Disc
- NTFS
- FAT 16, FAT 32, ExtFAT

7.3 Key Combinations

In Nero RescueAgent menu commands can be carried out on-the-fly via predefined key combinations.

The following key combinations are available:

[Ctrl+B]	Returns to the previous screen.
[Ctrl+R]	Starts recovery. Only available in the Files to Recover screen.
[Ctrl+S]	Starts the search for files on the selected storage medium. Only available on the starting screen.
[Ctrl+C]	Aborts restoring of the files. Only available in the Files Are Being Recovered screen.
[Ctrl+A]	Selects all files from the disk. Only available in the Files to Recover screen.
[Ctrl+P]	Selects all files for which problems have been determined and restoring is required. Only available in the Files to Recover screen.
[Ctrl+D]	Opens the Find Folder window. Only available in the Files to Recover screen.

[Ctrl+L]	The Save as window appears. Here you can store a log file and specify the storage location. Only available in the Recovery completed screen.
Ctrl+Pos 1	Returns to the start screen. Only available in the Recovery completed screen.
Alt+Plus button	Expands all entries in the folder tree starting from the selected entry or from the root if no entry is selected. Only available in the Files to Recover screen.
Alt+Minus button	Hides all entries in the folder tree starting from the selected entry or from the root if no entry is selected. Only available in the Files to Recover screen.
Esc	Closes Nero RescueAgent.

8 Glossary

Bridge Disc

A Bridge Disc is a variant of a CD-ROM that can be read from CD drives but also from CD-I devices such as a Photo CD for example. It is defined in the White Book Standard and contains extra information in an XA (Standard Architecture) track on the CD-ROM.

FAT

FAT (File Allocation Table) is a file system developed by Microsoft. The FAT 12, FAT 16 and FAT 32 file systems are used on all types of mobile storage media (e.g. USB sticks, memory cards).

ISO 9660

The International Organization for Standardization defined the Universal Standard 9660 which determines the features of the CD. This format is platform-independent and can thus be read by computers with different operating systems. In order to ensure universal readability, the file names used should be as short as possible. (In a DOS environment no more than eight characters may be used).

Joliet

Joliet refers to an extension of the ISO-9660 standard for file names. Joliet was designed by Microsoft in order to represent more characters. The file name can be up to 64 characters long and contain the letters A-Z, a-z, umlauts and the ß.

Multisession Disc

A multisession disc can contain several sessions that are not fixed. This way, more data can be added in new sessions at a later point in time, and the disc is not closed until it is full.

NTFS

New Technology File System is a Windows® file system. Its advantages include differentiated access and rights management, as well as defragmented data storage, which allows the processing speed to remain high.

Packet-writing

Packet-writing refers to a procedure for writing to optical media incrementally. An optical medium, e.g. a DVD, can be used as a hard drive as a result. This way, files can be copied, moved, changed, or erased on the respective optical medium.

UDF

The Universal Disc Format is a platform-independent file system. File names can be up to 255 characters long; 8 and 16 bit character sets are supported.

9 Index

C

Conventions, manual 4

E

End screen

Close Application 15
New scan 15
Restore further files 15
Scan the same drive again 15

K

Key Combinations

[Ctrl+A] 16
[Ctrl+B] 16
[Ctrl+C] 16
[Ctrl+D] 16
[Ctrl+L] 17
[Ctrl+P] 16
[Ctrl+R] 16
[Ctrl+S] 16
Alt+Minus button 17
Alt+Plus button 17
Ctrl+Pos 1 17
Esc 17

L

Launching the Program 6

Log File

Location 13
Save 14

M

Manual, conventions 4

O

Overview

Method of working 5
Restored files 13
Storage location of log file 13

R

Restore

Overview 13
Save log file 14
Select files 12
Start over 14

S

Scan

Deep scan 7
Deeper 7
Fast scan 7
Faster 7
Same drive 15
Start screen 7

Scan

New 15

Screen

End screen 15
Files to Recover 9
Files to Recover screen 9
Guide 7
Help 7
Restoring completed 13
Start screen 7

Select

Criteria 12
Deep scan 8
Fast scan 8
Problem categories 12
Scan level: 8
Select criteria 12
Select fast scan 8
Select problem categories 12
Select restore files 12
Select scan level: 8
Select storage medium 8
Specific files 12
Storage medium 8

Select specific files 12

Show specific files 12

System requirement 16

W

Window

Only show specific files 10
Select specific files 10

10 Contact

Nero RescueAgent is a Nero AG product.

Nero AG

Im Stoeckmaedle 13-15
76307 Karlsbad
Germany

Internet: www.nero.com
Help: <http://support.nero.com>
Fax: +49 724 892 8499

Nero Inc.

330 N Brand Blvd Suite 800
Glendale, CA 91203-2335
USA

Internet: www.nero.com
Help: <http://support.nero.com>
Fax: (818) 956 7094
E-mail: US-CustomerSupport@nero.com

Nero KK

Rover Center-kita 8F-B, 1-2-2
Nakagawa-chuou Tsuzuki-ku
Yokohama, Kanagawa
Japan 224-0003

Internet: www.nero.com
Help: <http://support.nero.com>

Copyright © 2009 Nero AG and its licensors. All rights reserved.